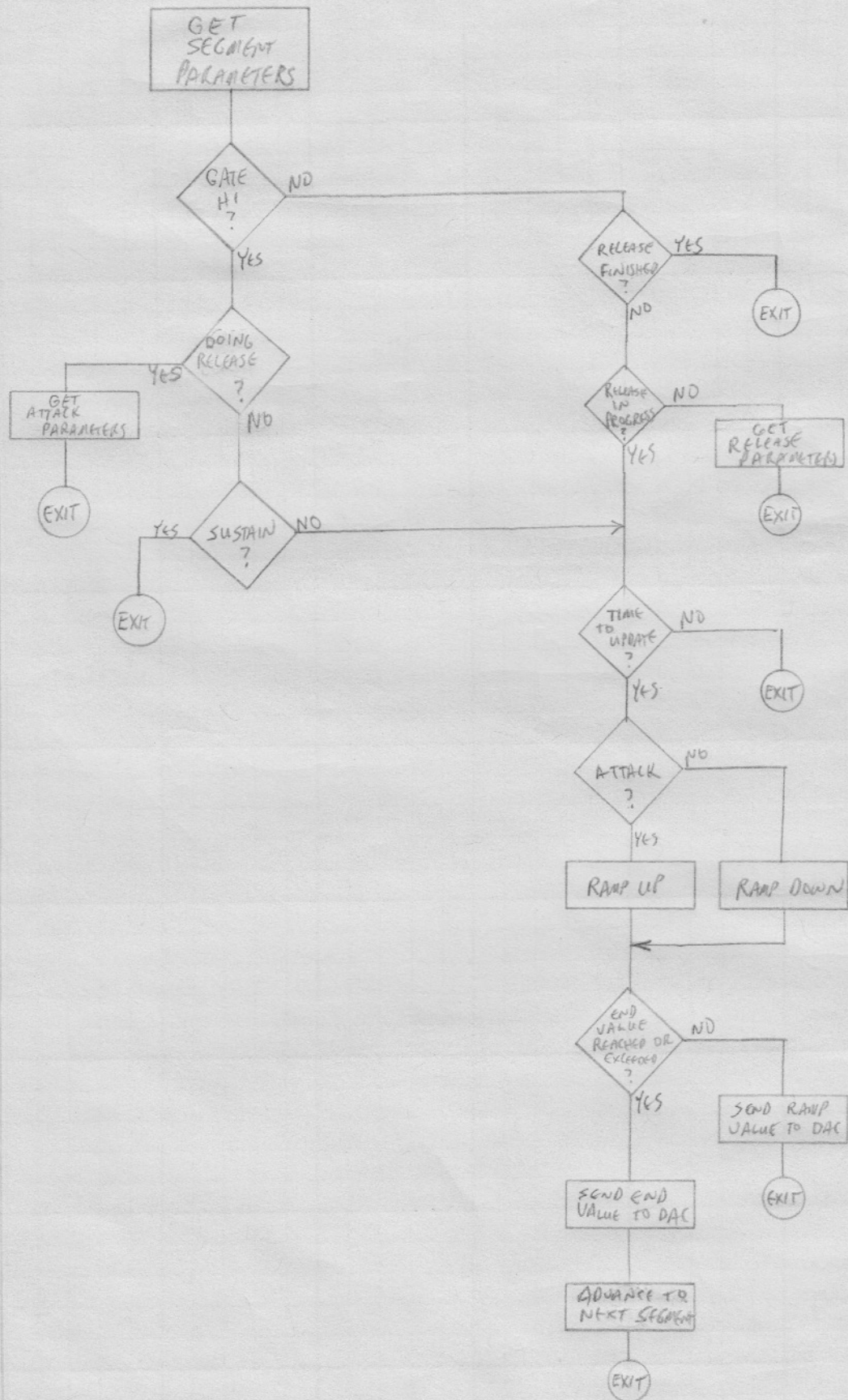


# ADSR ENVELOPE

7 SEP 82





$T = 16$  BIT VALUE - DECREMENTED REGULARLY (1ms)

$V = 16$  BIT VALUE - 8-BIT HIGH BITS SENT TO DAC  
 12 BITS USED FOR INCREMENT  
 + DECREMENTING

$\Delta T = 8$  BIT

$\Delta V = 16$  BIT

ADSR.SET  $V_1, T_1 / V_2, T_2 / V_3, T_3$

ADSR.TABLE BY  $\Delta V_1, \Delta T_1, \Delta V_2, \Delta T_2, \Delta V_3, \Delta T_3$

ADSR.TABLE computed from values in  
 ADSR.SET (minus ST's mapping)

ADSR.SET from A/D